



TOMORROW'S  
SHOW HOMES

## 12 ARCHIBALD DRIVE, MILDALE, AUCKLAND

---

JENNIAN HOMES  
AUCKLAND NORTH & WEST

---

Contact MARCO WANG

---

Email MARCO.WANG@JENNIAN.CO.NZ

---

Phone 027 515 7666

---

Web [www.jennian.co.nz](http://www.jennian.co.nz)



**Jennian**  
HOMES

Your personality Our expertise

# Your local Award Winning builder...



Jennian Homes are New Zealand's most awarded group builder. Innovative designs along with quality workmanship results in homes built to award winning standards.

- Design and Build
- House and Land Packages
- Fixed Price and Fast Completion
- 36 months Defects Warranty
- Jennian Completion Promise

## Come on over...

To our Milldale Display Home  
in **Havelock North**  
12 Archibald Drive, Milldale,  
Auckland

### Opening hours:

Saturday and Sunday 10.00 am - 4.00 pm  
Or by appointment.



## WELCOME TO JENNIAN HOMES, AUCKLAND NORTH & WEST

MILLDALE IS SITUATED JUST 25 MINUTES NORTH OF AUCKLAND CITY, AND LOCATED DIRECTLY OPPOSITE MILLWATER. ITS JUST MOMENTS AWAY FROM THE RAPIDLY EXPANDING SILVERDALE RETAIL CENTRE, HIGHGATE BUSINESS PARK AND SILVERDALE INDUSTRIAL CENTRE, RESIDENTS ARE IN ZONE FOR SEVERAL PUBLIC SCHOOLS WITH SEVERAL PRIVATE SCHOOLS AVAILABLE. ENJOY A GROWING NUMBER OF CAFES, BARS AND RESTAURANTS, PLUS WORLD CLASS RECREATIONAL AND MEDICAL FACILITIES, ALL JUST MINUTES FROM THE MANY BEACHES OF HIBISCUS COAST.

At Jennian Homes, we work alongside you to craft your ideal way of living, based on what you want. By combining your personality with our expertise, we'll create a living space that's all about you, right down to the little details.

We realise you might already know what kind of home you want. We're happy to build from plans you've already had drawn up or we can start from scratch and help you design the home of your dreams, using our architectural designers. Whatever you want, we can make it happen.

As well as helping you build your new house, Jennian Homes franchisees also offer great value house and land packages. From time to time, your local Jennian Homes team will include special house and land packages available in your region.

Jennian Homes Auckland North & West  
12 Archibald Drive, Milldale

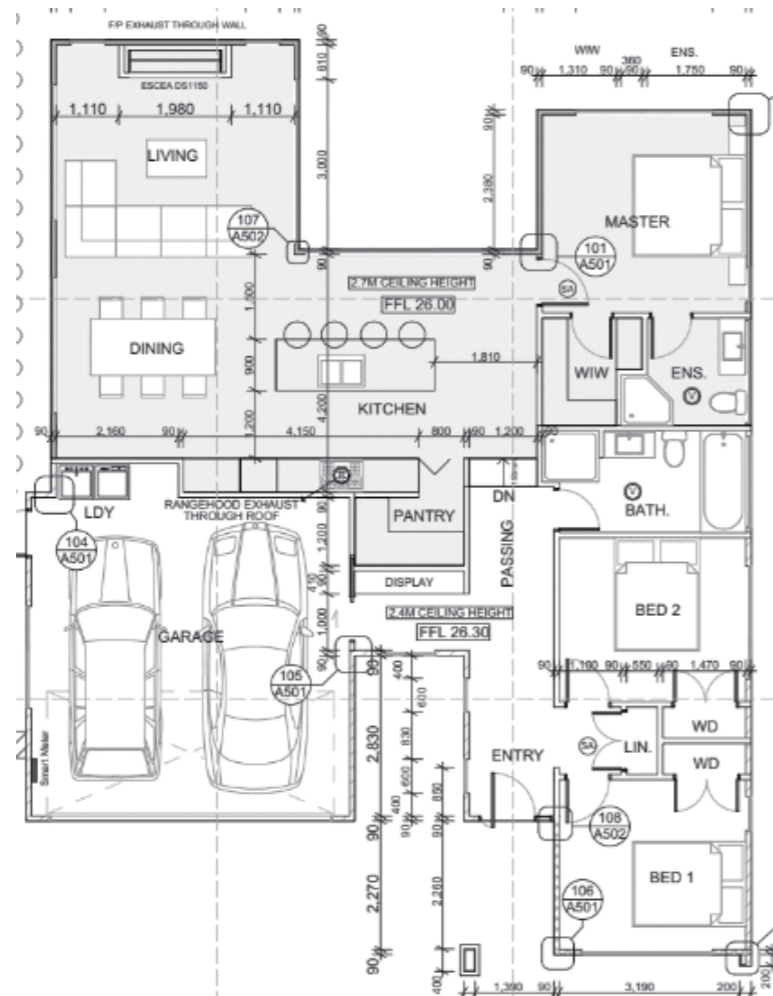
Marco Wang  
M 027 515 7666  
jennian.co.nz



**Jennian**  
HOMES

Your personality Our expertise

# Floor Plan



3 X BEDROOMS

OPEN PLAN LIVING

DOUBLE GARAGE

2 X BATHROOMS

DINING ROOM / FAMILY ROOM

SIZE: 159 M<sup>2</sup>

# Products



# RELIABLE BY DESIGN

Garador has looked after Kiwis for more than 50 years and we believe that every Kiwi deserves a Reliable Garage Door. So if you need a dependable garage door to keep your prized possessions in prime condition, visit Garador today.

**GARADOR.CO.NZ | 0800 GARADOR (427 236)**



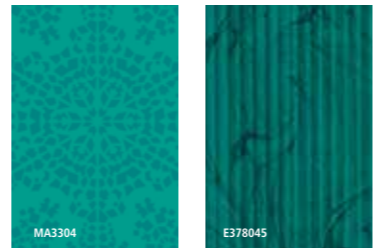
## Wall Paper + Paint

Get the *best* of both worlds...

Bring out the very best in your next project! Choose from Resene's huge range of designer wallpaper and complement with the latest on trend colours from The Range fashion colours fandeck.

**Resene ColorShop**  
*your paint and wallpaper experts!*

[www.resene.co.nz/colorshops](http://www.resene.co.nz/colorshops)





# THE BEAUTY OF CHOICE

FRENCHDOOR NOW AVAILABLE IN BLACK STAINLESS STEEL



**CONTRO** delivers the best of both worlds – providing the modern look of a Free-standing bath with the practical benefits of being positioned flush against the wall. Now also available with Left and Right Hand versions enabling installation into the corner of a room.



The double ended Contro Back to Wall Centre bath allows versatile installation and tap positions, with a large internal space, due to a narrow external edge. Tapware can be wall mounted, Free-standing or Fitted to an integrated shelf. For more information, visit [www.athena.co.nz](http://www.athena.co.nz)

[athena.co.nz](http://athena.co.nz)

athena  
BATHROOMS

**FISHER & PAYKEL**

[fisherpaykel.com](http://fisherpaykel.com)

# New Zealand. Always.



In this changing world, there's one thing we want to stay the same. Our country. Everything we do, from using over 80% recycled glass to careful water and energy conservation at our plant, ensures that we strive to minimise any negative impact on the environment. It's how we recently earned a highly prized EPD, an Environmental Product Declaration.

When you choose Pink® Batts®, you're selecting an insulation product that works beautifully always while helping keep New Zealand beautiful - too.

Our online tool can help you choose the right levels of Pink® Batts® insulation - **give it a go today at [pinkbatts.co.nz/recommends](http://pinkbatts.co.nz/recommends)**



**pink® batts®**  
Always.

OVER 80% RECYCLED GLASS ■ PROVEN SAFE ■ LIFETIME WARRANTY

# WATERWARE

HEATING & COOLING

## COMFORT COMES IN MANY SHAPES AND SIZES WITH WATERWARE'S RADIATORS

European designed and manufactured, our range offers a high quality finish, low running cost and durability making them an ideal choice for home life.

Call us today to discuss the best solution for your home.



[waterware.co.nz](http://waterware.co.nz) | 0800 WATERWARE

# Exterior

THE ENTRANCE TO THE PROPERTY IS OPEN AND WELCOMING WITH FABULOUS LANDSCAPING BOTH ON THE PROPERTY AND IN THE STREET. VISIT [WWW.TOMORROWSSHOWHOMES.CO.NZ](http://WWW.TOMORROWSSHOWHOMES.CO.NZ) TO VIEW MORE PHOTOS.



# Kitchen/Dining

TILE WAREHOUSE  
FRAMMENTI BLACK  
MOSAIC



FISHER & PAYKEL  
INTEGRATED  
RANGEHOOD



FISHER & PAYKEL  
GAS COOK TOP

FOR AN INVITING SUMMER VIBE, THE PLACE TO BE IN THIS HOUSE IS THE FAMILY ROOM. EASY ACCESS TO THE KITCHEN/DINING AREA AND AN OUTDOOR ALFRESCO MAKE THIS PART OF THE HOME A MULTI-FUNCTIONAL, ENJOYABLE SPACE. VISIT [WWW.TOMORROWSSHOWHOMES.CO.NZ](http://WWW.TOMORROWSSHOWHOMES.CO.NZ) TO VIEW MORE PHOTOS.



FISHER & PAYKEL  
FRENCH DOOR FRIDGE  
/FREEZER, 519L



FISHER & PAYKEL  
DOUBLE DISHDRAWER  
DISHWASHER,  
14 PLACE SETTINGS



FISHER & PAYKEL  
OVEN, 60CM,  
6 FUNCTION



FISHER & PAYKEL  
WASTE DISPOSAL

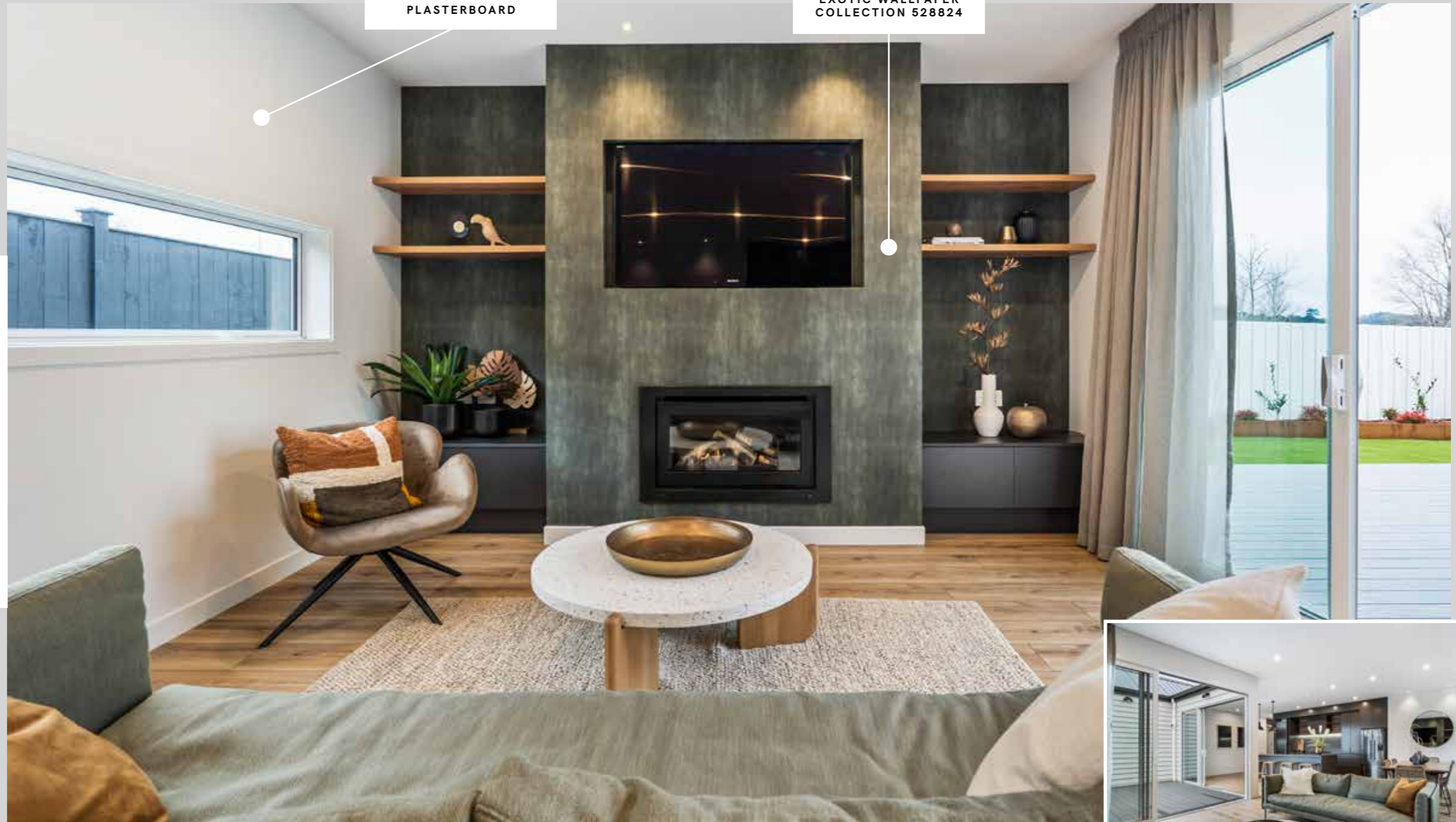




# Lounge/Living

GIB® STANDARD PLASTERBOARD

RESENE TROPIC EXOTIC WALLPAPER COLLECTION 528824



THIS DINING/FAMILY AREA IS ADAPTABLE FOR EVERY SEASON, OPEN AND WELCOMING IN SUMMER OR CLOSED AND COSY IN WINTER. VISIT [WWW.TOMORROWSSHOWHOMES.CO.NZ](http://WWW.TOMORROWSSHOWHOMES.CO.NZ) TO VIEW MORE PHOTOS.



# Master Bedroom

THE MASTER BEDROOM NEEDS TO BE A SPACE SET TO IMPRESS THE HOMEOWNER. SPACE AND ALL AMENITIES ARE A MUST BUT THIS ROOM HAS SOMETHING EXTRA. VISIT [WWW.TOMORROWSSHOWHOMES.CO.NZ](http://WWW.TOMORROWSSHOWHOMES.CO.NZ) TO VIEW MORE PHOTOS.



PINK® BATTS®  
CEILING INSULATION

RESENE TROPIC  
EXOTIC WALLPAPER  
COLLECTION 220121

RESENE EIGHTH  
BLACK WHITE

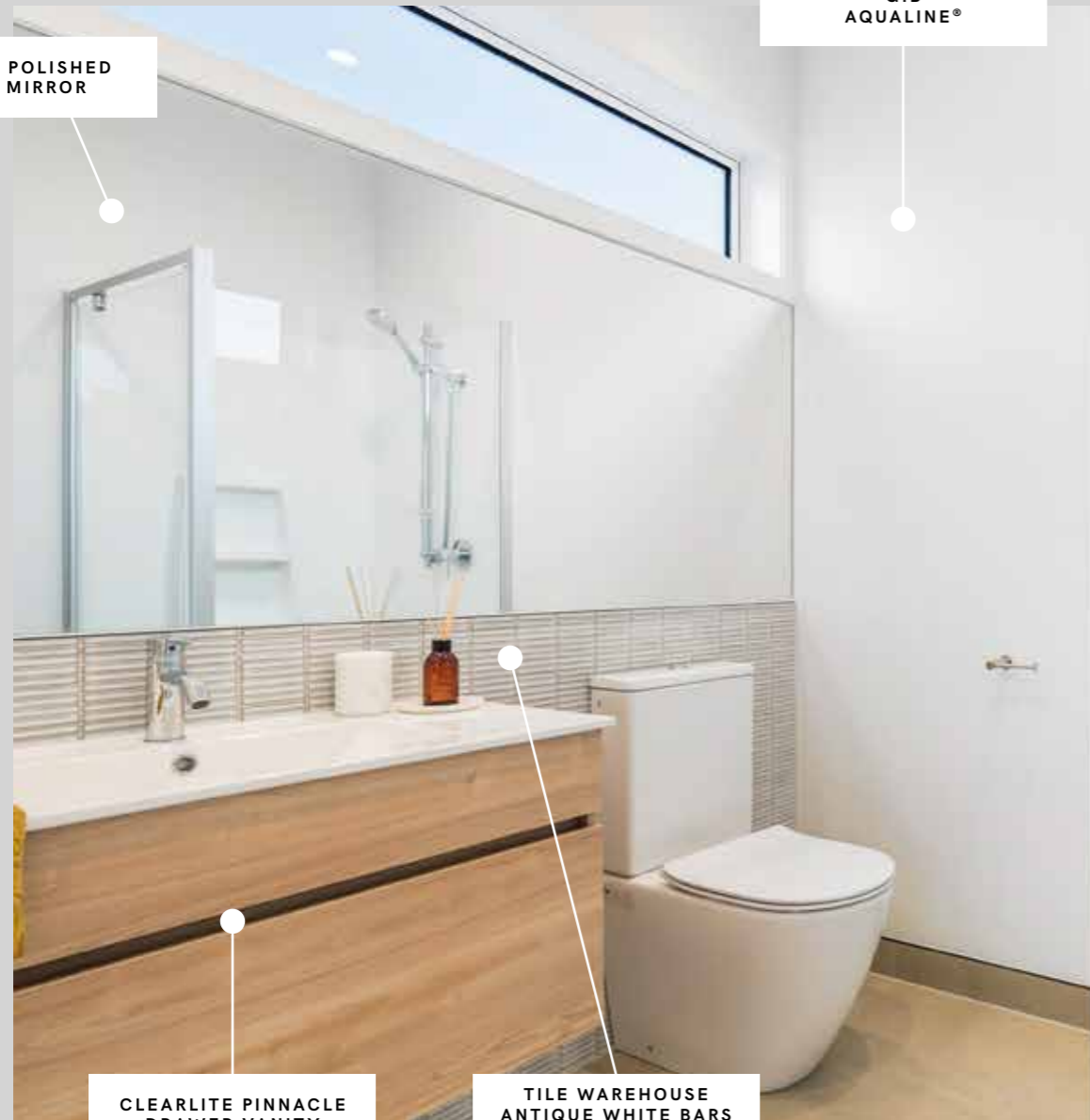


# Ensuite & Wardrobe

ATHENA POLISHED  
EDGE MIRROR

GIB  
AQUALINE®

CLEARLITE 2 SIDED  
SIERRA SHOWER



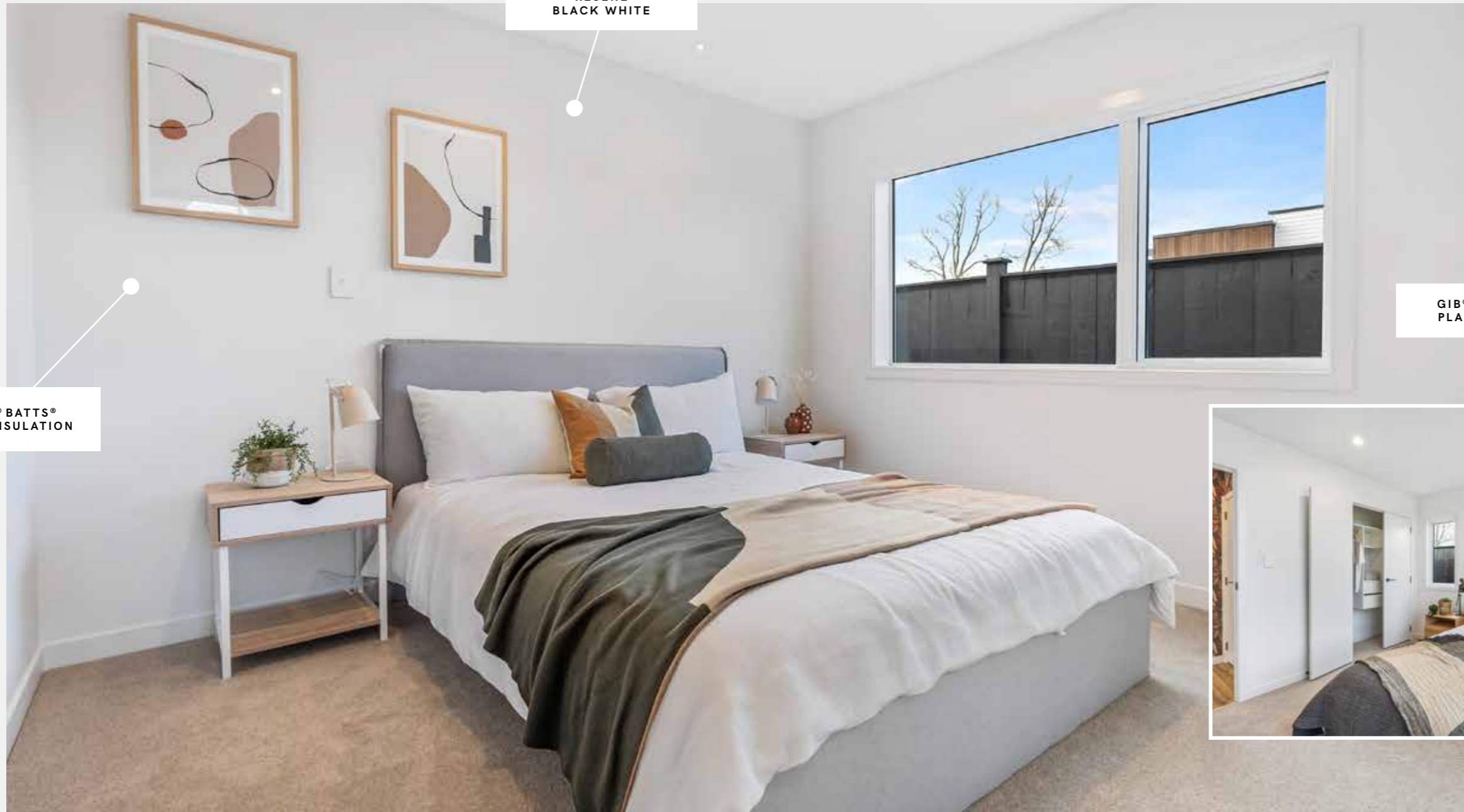
CLEARLITE PINNACLE  
DRAWER VANITY

TILE WAREHOUSE  
ANTIQUE WHITE BARS  
MOSAIC



BATHROOMS NEED TO BE FUNCTIONAL AND STRONG TO COPE WITH HEAVY USE, ESPECIALLY FOR LARGE FAMILIES. CLEVER USE OF SPACE AND SMART PRODUCT CHOICES IS ESSENTIAL. VISIT [WWW.TOMORROWSSHOWHOMES.CO.NZ](http://WWW.TOMORROWSSHOWHOMES.CO.NZ) TO VIEW MORE PHOTOS.

## Bedrooms



VISIT [WWW.TOMORROWSSHOWHOMES.CO.NZ](http://WWW.TOMORROWSSHOWHOMES.CO.NZ) TO VIEW MORE PHOTOS.

# Bathroom



BATHROOMS NEED TO BE FUNCTIONAL AND STRONG TO COPE WITH HEAVY USE, ESPECIALLY FOR LARGE FAMILIES. CLEVER USE OF SPACE AND SMART PRODUCT CHOICES IS ESSENTIAL. VISIT [WWW.TOMORROWSSHOWHOMES.CO.NZ](http://WWW.TOMORROWSSHOWHOMES.CO.NZ) TO VIEW MORE PHOTOS.

### Other Areas



VISIT [WWW.TOMORROWSSHOWHOMES.CO.NZ](http://WWW.TOMORROWSSHOWHOMES.CO.NZ) TO VIEW MORE PHOTOS.



## BATHROOMS FOR LIVING

Clearlite brings you our latest range of quality showers, baths, vanities and bathroom accessories. Timeless bathroomware made for New Zealand homes.

To view our latest collection please visit  
[www.clearlite.co.nz](http://www.clearlite.co.nz)

100% NEW ZEALAND OWNED AND OPERATED

**CLEARLITE**  
 BATHROOMS



## GIB-Cove<sup>®</sup> Reflect your style

The new GIB-Cove<sup>®</sup> range was selected by New Zealand architects to provide the perfect finishing touch to your new home or renovation. The range offers a variety of aesthetics that can enhance any room, and reflect your own unique personality and style.



Mezzo  
\*also featured above

Tenor

Basso

Alto

Classic

**fairview**  
EXCEPTIONAL WINDOWS & DOORS

**FRAMING DREAMS  
FOR OVER 50 YEARS**

For over 50 years, Fairview has been creating innovative, high quality and best value joinery for a full range of customer's needs. We supply the industry through a nationwide network of 50 fabricators who understand their local markets perfectly.

So you can specify with confidence.

[www.fairviewwindows.co.nz](http://www.fairviewwindows.co.nz)  
[archteam@fmi.co.nz](mailto:archteam@fmi.co.nz)



**SMART HOME  
MADE EASY**

**ARTEOR™ WITH NETATMO**

**HELLO HOME!**

Introducing Arteor with Netatmo by Legrand, a collection of smart switches and sockets allowing for control of lights, appliances, blinds and shutters from anywhere using a smart device. Using the **Home+Control App** monitor energy consumption in real-time, create custom scenarios such as 'Leaving Home' allowing you to power down all connected devices as you leave your home.

- Wifi/Zigbee Technology Extends Range and Responsiveness
- Control via Switches, Home + Control App or Voice Commands
- Monitor Energy Consumption
- Full Home Control from Anywhere



THE GLOBAL SPECIALIST  
IN ELECTRICAL AND DIGITAL BUILDING INFRASTRUCTURES

Arteor™  
WITH NETATMO | **legrand**®

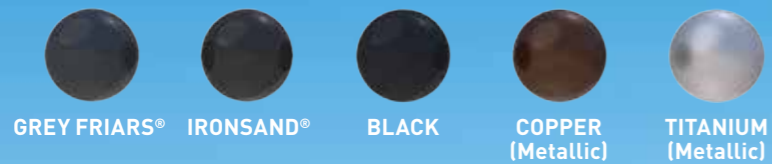
[www.legrand.co.nz](http://www.legrand.co.nz)



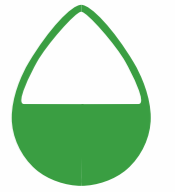
# CAPTIVATING COLOUR

## MARLEY STRATUS DESIGN SERIES®

Designer uPVC spouting in two styles. High capacity Typhoon® half round profile and contemporary Stormcloud® quarter round. Both systems are available in 5 colours with matching downpipe.



-   
LOW MAINTENANCE
-   
100% RECYCLABLE
-   
MADE IN NZ
-   
WILL NOT RUST
-   
15 YEAR GUARANTEE
-   
U.V RESISTANT
-   
SAFE FOR DRINKING



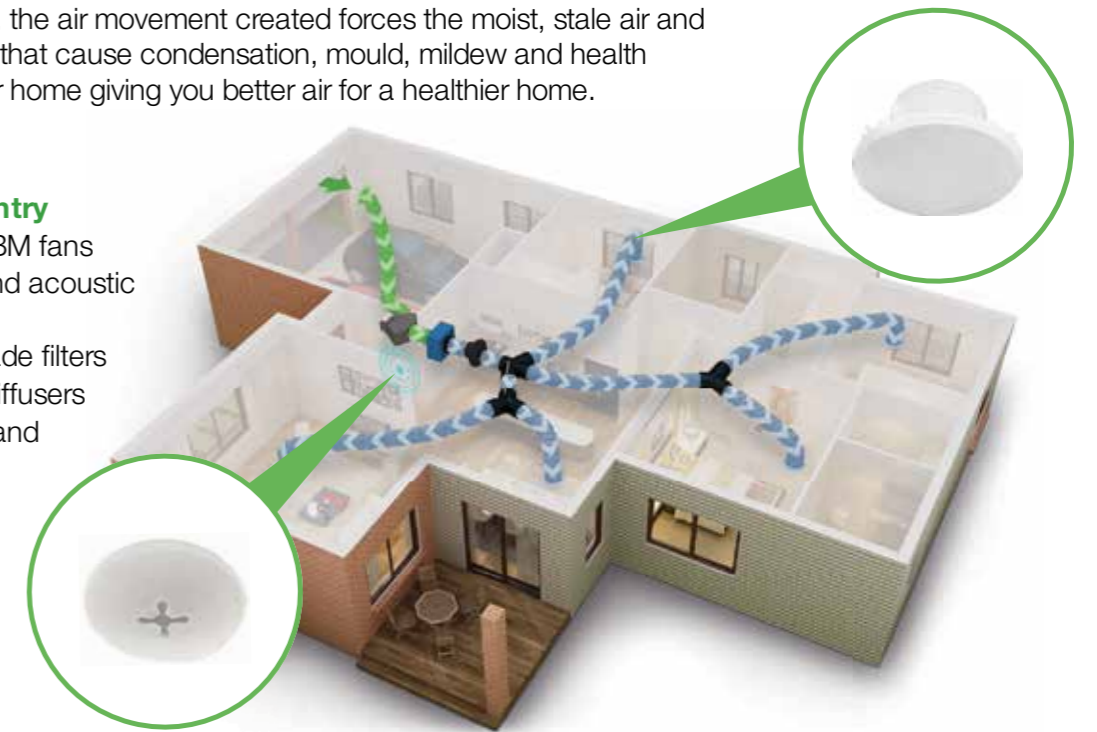
## Control your indoor climate

SmartVent Evolve2 is a centralised positive pressure system that constantly evaluates the environmental dynamics in and around your home. Four temperature and humidity sensors measure moisture content throughout the home, in the roof cavity and outside, to determine how best to deliver improved air quality without the risk of over-ventilating.

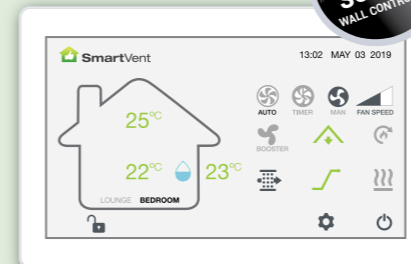
Designed for New Zealand conditions, SmartVent Evolve2 draws in fresher, drier air from the roof cavity and filters it before distributing the clean air in, and around, your home via a network of ceiling diffusers. Air from the outside can also be sourced if the + Cool seasonal upgrade has been installed. Whichever the air source option, the air movement created forces the moist, stale air and unwanted pollutants that cause condensation, mould, mildew and health problems, out of your home giving you better air for a healthier home.

### System Componentry

- Quality German EBM fans
- Nude, insulated and acoustic insulated ducting
- High quality F7 grade filters
- Ceiling mounted diffusers
- Four temperature and humidity sensors



### System Controller



*The touch screen controller incorporates an easy-to-use daily scheduler for specific ventilation requirements.*

*On-screen information confirms current temperatures, moisture levels and system status. Once you have selected your preferred temperature, the system operates automatically.*

*The touch screen controller can also be used for setting seasonal upgrades.*

# CARTERS FRAME & TRUSS

It's what's on the inside that counts.

- CARTERS have been in the building industry for **over 150 years**, we're a brand you know you can trust.
- All CARTERS Frames and Trusses are manufactured in accordance with the **NZS3604:2011 Timber Framed Buildings** and to consented plans and specifications.
- We have **FSC (Forestry Stewardship Council) accredited** manufacturing plants.
- We have built our frames and trusses utilising **CHH Laserframe structural machine graded timber** for over 20 years.
- Your house, your investment, your home - **it's secure with CARTERS Frame & Truss.**

**CARTERS**  **Your Building Partner**



**Hubbell Home**  
Ultra-fast broadband & home networking



#### Building or Renovating?

Then now is the perfect time to be thinking about home technology. Fibre optic connections will be available to 75% of New Zealand homes within 10 years, bringing with it ultra-fast broadband (UFB) access to downloadable movies, TV on demand and video calling.

#### An Investment:

A home network adds to the re-sale value of your home, it's an investment for your future.

#### Future Proof Building:

Running all your network cable back to one location gives you the flexibility to change the function of your rooms. So all technologies can be available in every room.

#### Home Theatre/ Entertainment:

You no longer need to leave the house if you want to watch a HD movie or TV show? This can all be done by the 'click of a button' on your home media player such as an AppleTV™.



#### Bedroom:

Change the channel on your centrally located Sky/Freeview Box or see who is at the front door with your Network Camera.



#### Your Home Network:

A home network allows all the stand-alone devices in your home to work together. Cat5e cabling or better offers the bandwidth for this to function effectively and efficiently. Something WiFi alone can't match.



#### Home Office:

Whether it be Video Conferencing (Skype®) to the other side of the world, or as local as a network printer or scanner on the other side of the room, your office can now run at high speed and at high efficiency.



#### Family room:

Let the kids complete their school project online and keep an eye on them surfing the internet on your laptop or portable device; Wi-Fi in your home network solution allows internet access in every room.



For more information on Hubbell Home Networking or to talk with someone about the best solution for your home call: 0800 328 278, or visit [www.hubbell.co.nz](http://www.hubbell.co.nz)

# New Zealand's Best Gutter Protection

Tile Warehouse, Proud to Partner with Jennian Homes

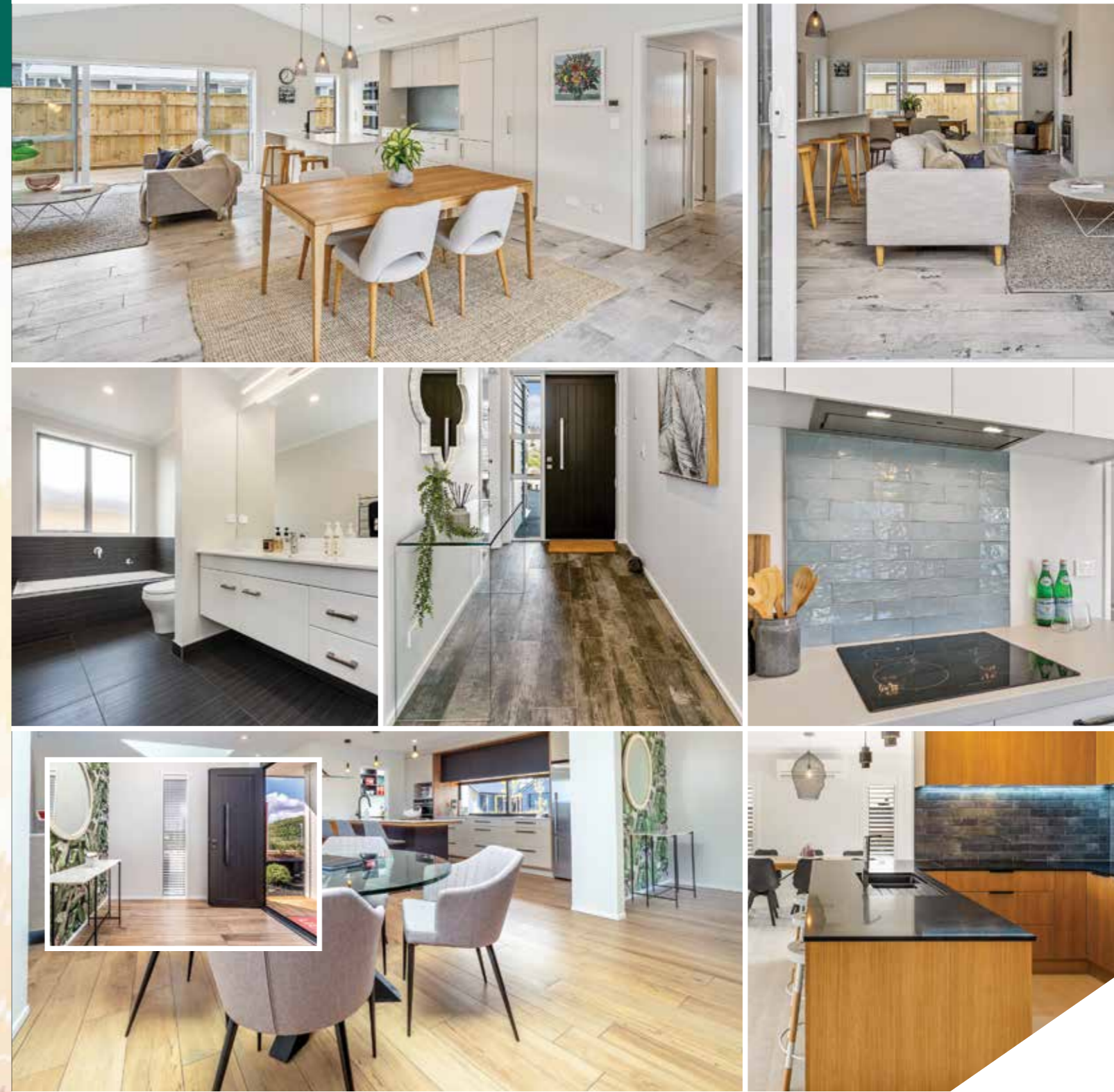


**STOPS Leaves, Birds & Pests**



**Suits Most Roofs**

Four Seasons Gutter Guards are unconditionally guaranteed for 20 years and provide protection to both you and your property all year round!



**0508 30 25 23**

[www.fourseasonsgutterpro.co.nz](http://www.fourseasonsgutterpro.co.nz)

The 8 Smart Principles of Future-Proof Building



*We make Design & Selection Easy!*

[www.tilewarehouse.co.nz](http://www.tilewarehouse.co.nz)

0800 289 845



# GERARD ROOFING PROUDLY SUPPORTING JENNIAN HOMES.

Ask about our Architectural Range.

Please contact us on:  
P 0800 244 737  
E [info@gerardroofs.co.nz](mailto:info@gerardroofs.co.nz)  
[www.gerardroofs.co.nz](http://www.gerardroofs.co.nz)



**QUALITY.  
INTEGRITY.  
CRAFTSMANSHIP.  
SUSTAINABILITY.  
OWNERSHIP.**

**THAT'S WHAT WE'RE PROUD TO DELIVER.**  
CRAIG & JEN TAYLOR\*, MASTER BUILDERS

We know building a new home or doing a major renovation is a big deal – you need a builder you can trust. Registered Master Builders is New Zealand's trusted building association. When you choose a Master Builder you can be assured of quality workmanship, delivered with integrity.

FOR MORE INFORMATION VISIT:  
[masterbuilder.org.nz](http://masterbuilder.org.nz)

Kiwis  
**TRUST**  
a Master Builder\*\*

\* of Bright Build  
\*\* 2018 Market Research





# TOMORROW'S SHOW HOMES

THE TOMORROW'S SHOW HOME PROGRAMME BRINGS TO YOU THE LATEST  
SHOW HOMES, PRODUCTS AND BUILDING SERVICES. HELPING YOU GET TIPS  
AND IDEAS TO EXPLORE YOUR DREAM HOME SO YOU CAN GET YOUR BUILD  
RIGHT THE FIRST TIME. WE BELIEVE IN THE BUILDING OF SMARTER AND MORE  
SUSTAINABLE HOMES. FOR FURTHER INFORMATION PLEASE EXPLORE AT

[WWW.TOMORROWSSHOWHOMES.CO.NZ](http://WWW.TOMORROWSSHOWHOMES.CO.NZ)